

CLC Global PC version Manual

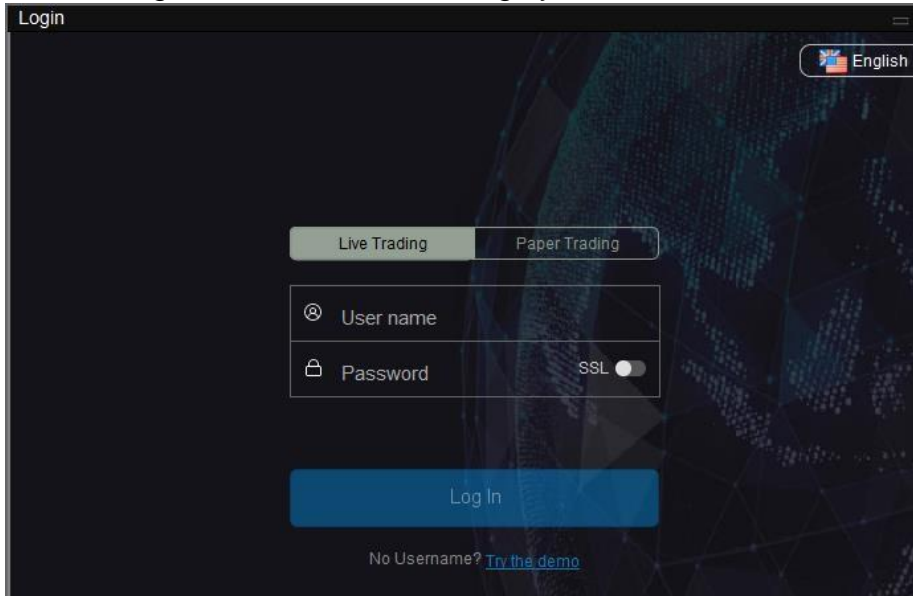
Content

1.	LOGIN.....	2
2.	MARKET QUOTES.....	3
3.	ORDER.....	3
	3.1. BUY / SELL ORDER	4
	3.2. ORDER CONFIRMATION.....	4
	3.3. ORDER CHECKING.....	5
	3.4. ORDER CANCELLATION	5
	3.5. ORDER AMENDMENT	5
	3.6. TODAY TRANSACTION	6
4.	RETRIEVE HISTORICAL TRADE HISTORY	6
5.	ACCOUNT PORTFOLIO	7

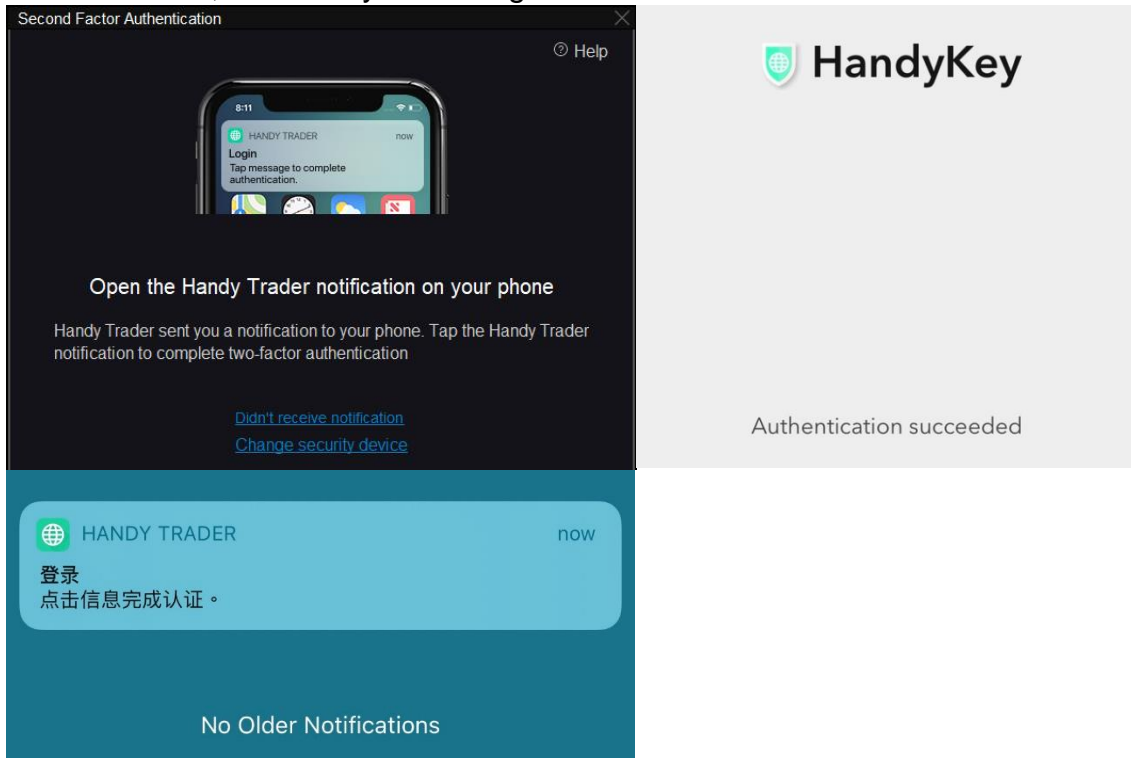
Updated on 9 September 2021

1. LOGIN

- Open CLC Global
- Select English or Chinese as your language
- Select **【Live Trading】**
- Enter **【Username】** and **【Password】**
- Press **【Log In】** to enter the trading system



- Open the Handy Trader notification on your phone. Tap message to complete authentication, and then you can log in.



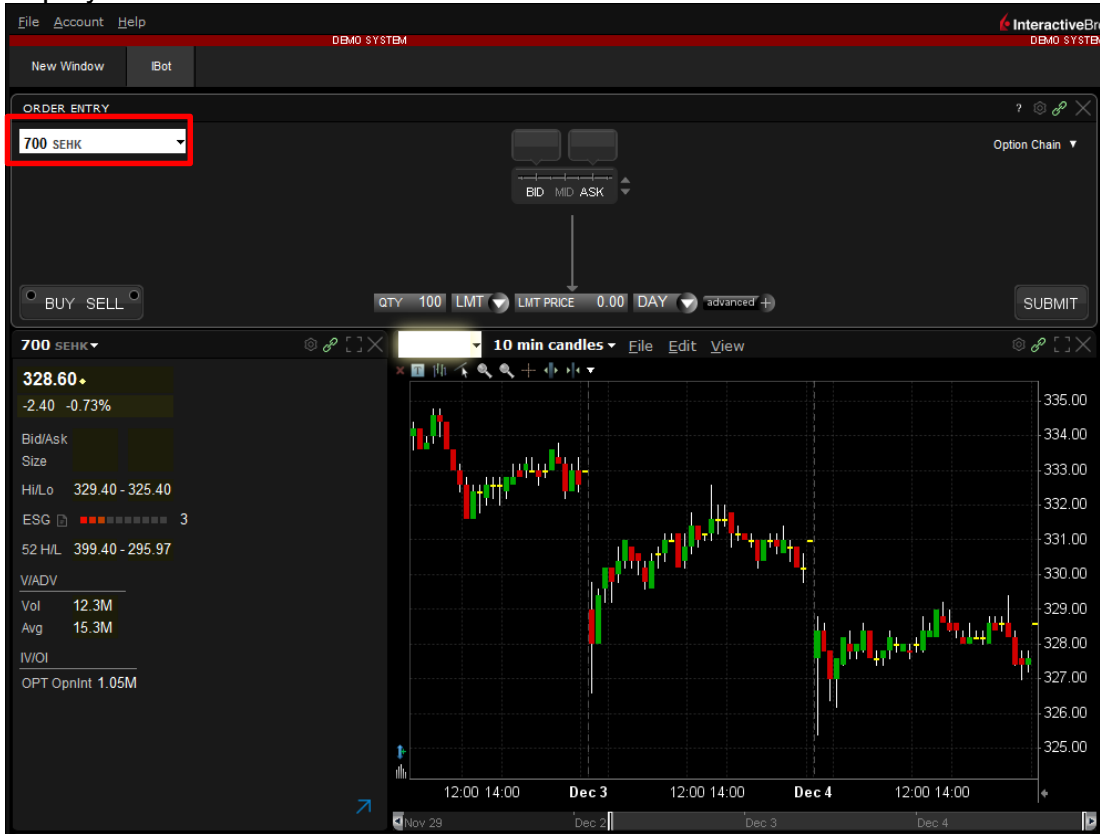
CLC Securities Limited

Unit 8506B, 85/F, International Commerce Centre, 1 Austin Road West, Tsim Sha Tsui, Hong Kong ☎ +852 3153 1128 | 🌐 www.clchk.com

The information contained in this document has not been independently verified and no representation or warranty expressed or implied is made as to, and no reliance should be placed on, the fairness, accuracy, completeness or correctness of this information or opinions contained herein. None of CLC Group or any of its affiliates or representatives shall have any liability whatsoever (in negligence or otherwise) for any loss howsoever arising from any use of this document or its content or otherwise arising in connection with this document. This document does not constitute an offer or invitation to purchase or subscribe for any shares and neither it nor any part of it shall form the basis of or be relied upon in connection with any contract or commitment whatsoever. Investment involves risks. The prices of securities fluctuate, sometimes dramatically and may become valueless. Investors should consider their own investment objectives and risk tolerance level before making any investment decision. This promotion has not been reviewed by the Securities and Futures Commission or any regulatory authority in Hong Kong.

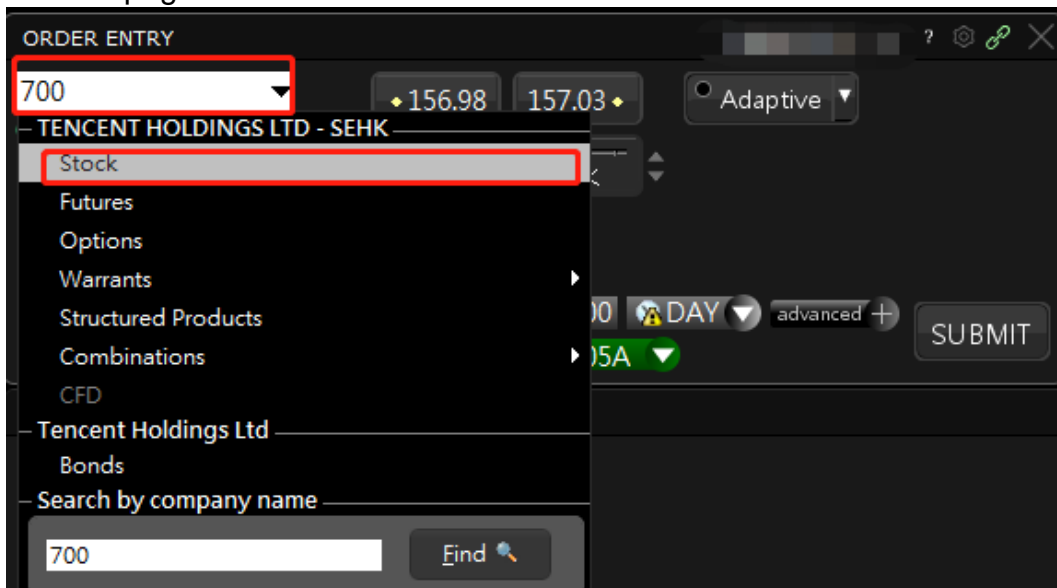
2. MARKET QUOTES

- Search the **【stock code】** on the top left corner, the price quote information will be displayed.



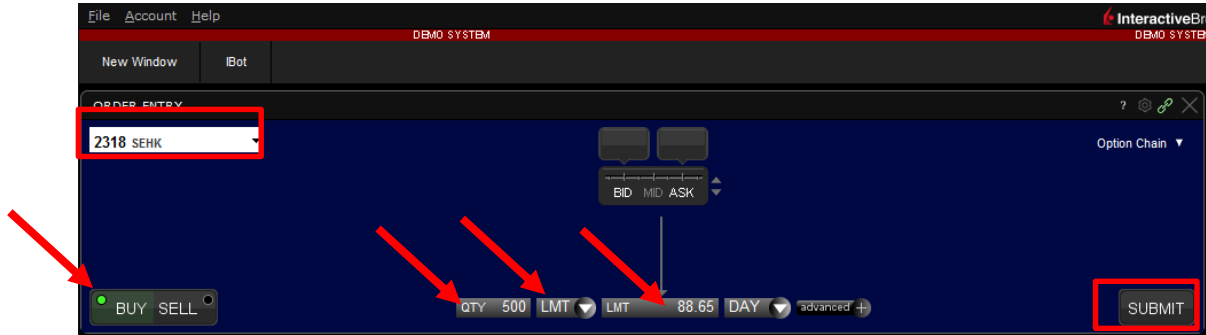
3. ORDER

- You can search the **【stock code】** and then select the type of investment product (stock, futures, options, warrants, structured products and bond) on ORDER ENTRY page



3.1. BUY / SELL ORDER

- Enter the **【stock code】** , select BUY or SELL and enter the information below:
- Enter **【Quantity】**
- Select your order type after click **【LMT】** (LMT is limit order, MKT is market order)
- Enter **【Price】**
- Click **【Submit】**



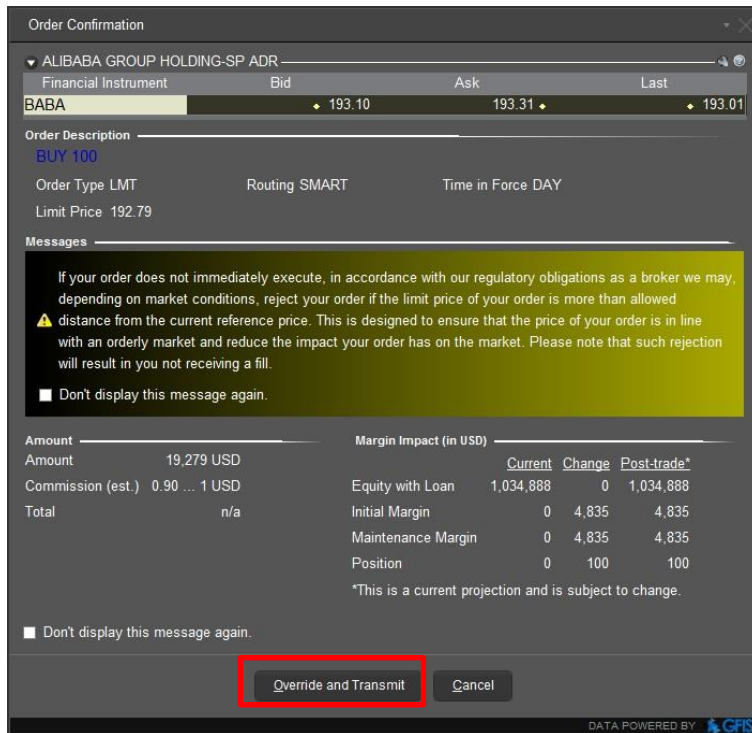
Remarks:

Order will not be proceeded if the followings occur:

- I. Insufficient fund for trading
- II. The Order size is not correct

3.2. ORDER CONFIRMATION

- Once click **【Submit】** , “Order Confirmation” page will pop up to show the detail of the order
- Check the detail of order, and then click **【Transmit】** / **【Override and Transmit】** to confirm the order



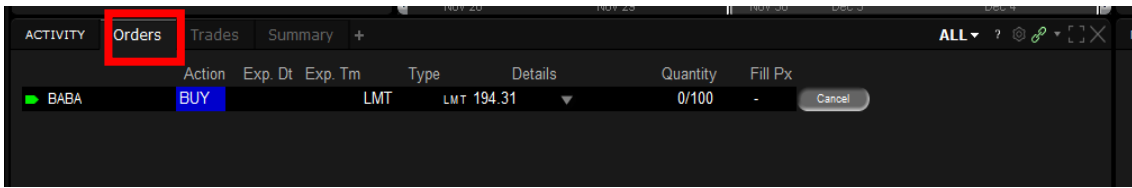
CLC Securities Limited

Unit 8506B, 85/F, International Commerce Centre, 1 Austin Road West, Tsim Sha Tsui, Hong Kong ☎ +852 3153 1128 | www.clchk.com

The information contained in this document has not been independently verified and no representation or warranty expressed or implied is made as to, and no reliance should be placed on, the fairness, accuracy, completeness or correctness of this information or opinions contained herein. None of CLC Group or any of its affiliates or representatives shall have any liability whatsoever (in negligence or otherwise) for any loss howsoever arising from any use of this document or its content or otherwise arising in connection with this document. This document does not constitute an offer or invitation to purchase or subscribe for any shares and neither it nor any part of it shall form the basis of or be relied upon in connection with any contract or commitment whatsoever. Investment involves risks. The prices of securities fluctuate, sometimes dramatically and may become valueless. Investors should consider their own investment objectives and risk tolerance level before making any investment decision. This promotion has not been reviewed by the Securities and Futures Commission or any regulatory authority in Hong Kong.

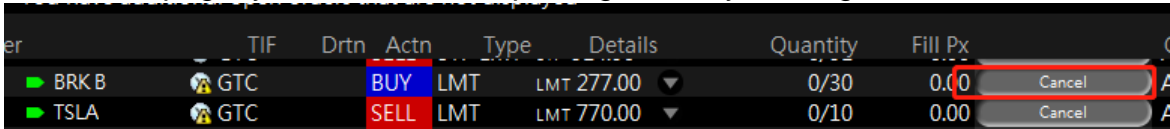
3.3. ORDER CHECKING

- You can check the order by clicking **【Order】** at the bottom of the trading platform.



3.4. ORDER CANCELLATION

- On Orders page, you can cancel a queuing order by clicking the **【Cancel】** button

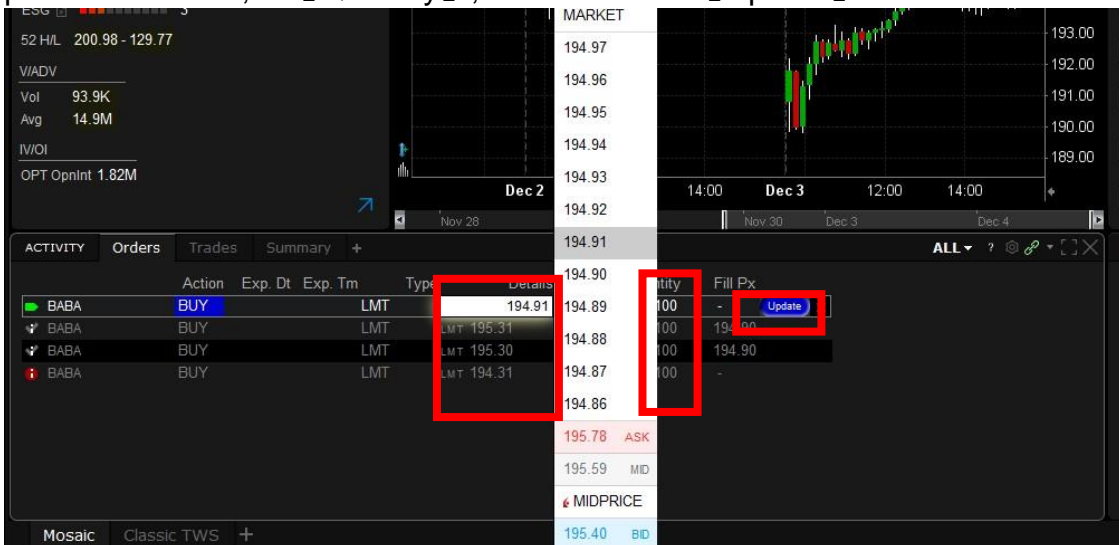


- Or cancel a queuing order by clicking the **【CXL】** button on graph



3.5. ORDER AMENDMENT

- On "Order" page, you can amend the queuing order by clicking the **【Details】** for price information, or **【Quantity】**, and then click **【Update】**



CLC Securities Limited

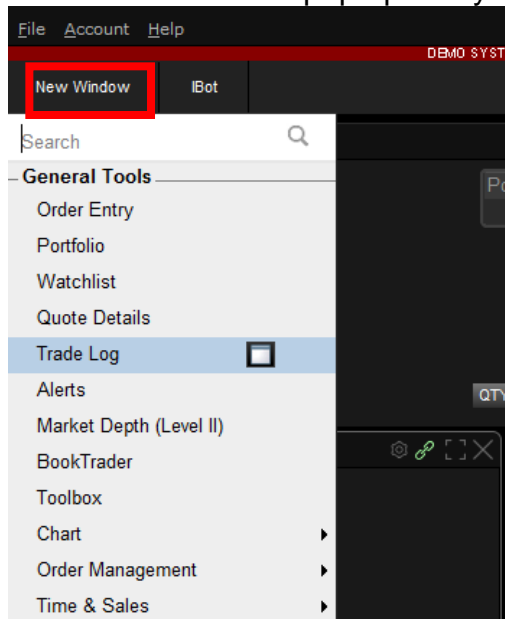
3.6. TODAY TRANSACTION

- On “Trades” page, you can view all transaction record today.

ACTIVITY	Orders	Trades	Summary	+					
+/-	Time	Fin Instrument	Action	Quantity	Price	Exch.	Account	Comm	Exctng Brkr ...
	18:49:17	BABA	BOT	100	194.90	IBKRATS	DU229348	1.00	
	18:48:58	BABA	BOT	100	194.90	IBKRATS	DU229348	1.00	

4. RETRIEVE HISTORICAL TRADE HISTORY

- Click **【New Window】** on page, and then select the **【Trade Log】**
- The trade record will pop up and you can check order history for last 7 days



TRADES	File	Edit	Trades	View	Settings	Help					
DU229348											
Show trades for: Last 7 Days											
+/-	Account	Action	Quantity	Fin Instrument	Price	Currency	Exch.	Time	Order Ref.	Comm	Exctng Br...
	DU229348	BOT	100	BABA	194.90	USD	IBKRATS	18:48:58		1.00	
	DU229348	BOT	100	BABA	194.90	USD	IBKRATS	18:49:17		1.00	

5. ACCOUNT PORTFOLIO

- Click the **【Portfolio】** to review the up-to-date account information
- View Client Cash/position/Stock Portfolio

DAILY P&L	FINANCIAL INSTRUMENT	POS	MKT VALUE	AVG PX	LAST	CHNG
	USD CASH		994,947			
118	BABA	200	39,100	194.91	195.50	+0.60
262,050,000	HSI Dec30'19 @HKFE	200	262,050,000	3.9	26203	+137

- User can click **【ACCOUNT】** to review more information of cash balance

Parameter	Total	US Securities	US Commodities
Net Liquidation Value	1,034,986 USD	1,025,957 USD	9,029 USD
Equity with Loan Value	1,034,986 USD	1,025,957 USD	9,029 USD
Cash	994,947 USD	985,918 USD	9,029 USD
MTD Interest	959 USD	959 USD	0 USD

Parameter	Total	US Securities	US Commodities
Current Initial Margin	9,770 USD	9,770 USD	0 USD
Current Maintenance Margin	9,770 USD	9,770 USD	0 USD

Parameter	Total	US Securities	US Commodities
Current Available Funds	1,025,216 USD	1,016,187 USD	9,029 USD
Current Excess Liquidity	1,025,216 USD	1,016,187 USD	9,029 USD
SMA	1,006,417 USD	1,006,417 USD	0 USD
Buying Power	4,100,865 USD		

Currency	Total Cash	MTD Intrst	Stock	Options	Futures	FOPs	Nt LqdtN Vt	Unrizd P&L	Rizd P&L
HKD	0	0	0	0	0	0	0	0	0
USD	994,947	959	39,080	0	0	0	1,034,986	98	0
Total (in ...)	994,947	959	39,080	0	0	0	1,034,986	98	0

Fnncl Instrmnt...	Pos	Mkt Val	Market Price	Avrg Px	Unrizd P&L	Realized P&L	Liquidate Last
BABA	200	39,080	195.40	194.91	98	0	No

Please contact your AE or our Customer Services
at (852) 3153 1128 if you have any questions.

~ THANK YOU ~